

Panoramas

Published on LEARNZ (<http://www.learnz.org.nz>)

[Panoramas \[1\]](#)

During the field trip panorama photos are taken which help students orientate themselves to the field trip environment. 'Interactive' panoramas and 'still image' panoramas will appear here during the field trip. Questions from the captions are best answered after watching videos, reading a diary, or listening to an audioconference.

Interactive panoramas

click the thumbnail image to open the viewer
(you will need the latest version of Java installed)

Day 1

Day 2

Day 3



[Around Mount Cook/Pukeahu \(2 images\) \[2\]](#)



[In the trench \(2 images\) \[3\]](#)



[In and around the trench \(2 images\) \[4\]](#)

Still image panoramas

click any photo for an enlargement



[5]Buckle St diversion as at Week 17 - 26.11.2012.

[Download image \[5\]](#)

Monday 18 November



[6] Looking across the harbour to Wellington City. How do you think the city has changed since it first became the capital of New Zealand?

[Download image](#) [6]

Tuesday 19 November



[7] Overlooking the trench for the Buckle Street underpass. Can you see the retaining walls? What do you think these are made out of?

[Download image](#) [7]

Panoramas

Published on LEARNZ (<http://www.learnz.org.nz>)



[8]The Dominion Museum Building beside the National War Memorial. What was this building used for and what is it used for now?

[Download image](#) [8]



[9]The western end of the Buckle Street trench. How do you think the design of the Buckle Street diversion has helped reduce disruption to road users?

[Download image](#) [9]

Wednesday 20 November

Panoramas

Published on LEARNZ (<http://www.learnz.org.nz>)



[10]At the end of the Buckle Street trench. How many cranes can you see and what materials do you think they will be lifting?

[Download image](#) [11]



[12]At the western end of the Buckle Street trench the road will be improved to create better traffic flow on an inner city bypass. What similarities do you think there would be between this roading project and the Memorial Park project?

[Download image](#) [12]

Thursday 21 November

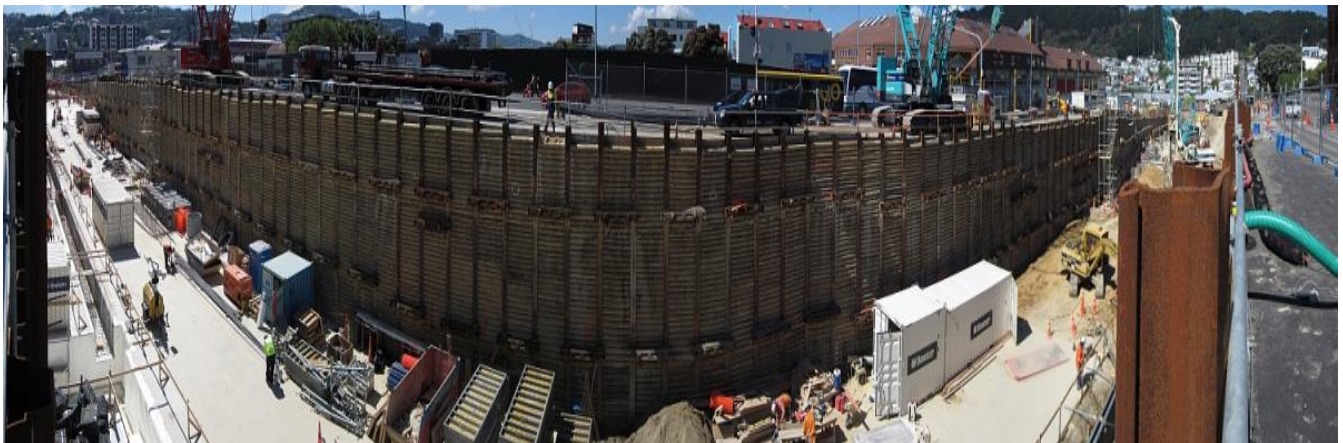
Panoramas

Published on LEARNZ (<http://www.learnz.org.nz>)



[13] Looking at the southern wall of the Buckle Street trench. Can you see the different types of retaining walls. Why are they different?

[Download image](#) [13]



[14] Looking out over the northern wall of the Buckle Street trench. Can you see any differences between this wall and the southern wall, if so what are they?

[Download image](#) [14]

Source URL: <http://www.learnz.org.nz/memorialpark134/panoramas>

Links

[1] <http://www.learnz.org.nz/memorialpark134/panoramas>

[2] <http://360.learnz.org.nz/mp134/mp134-d01/index.html>

[3] <http://360.learnz.org.nz/mp134/mp134-d02/index.html>

[4] <http://360.learnz.org.nz/mp134/mp134-d03/index.html>

[5] <http://www.learnz.org.nz/sites/learnz.org.nz/files/Field%20trips/memorialpark134>

Panoramas

Published on LEARNZ (<http://www.learnz.org.nz>)

/pan0-week-17-26-11.jpg

[6] <http://www.learnz.org.nz/sites/learnz.org.nz/files/Field%20trips/memorialpark134/b-mp134-01-pan-wellington-harbour.jpg>

[7] <http://www.learnz.org.nz/sites/learnz.org.nz/files/Field%20trips/memorialpark134/b-mp134-02-pan-trench.jpg>

[8] <http://www.learnz.org.nz/sites/learnz.org.nz/files/Field%20trips/memorialpark134/b-mp134-03-pan-gallery.jpg>

[9] <http://www.learnz.org.nz/sites/learnz.org.nz/files/Field%20trips/memorialpark134/b-mp134-04-pan-highway.jpg>

[10] <http://www.learnz.org.nz/sites/learnz.org.nz/files/Field%20trips/memorialpark134/mp134-05-pan-in-trench.jpg>

[11] <http://www.learnz.org.nz/sites/learnz.org.nz/files/Field%20trips/memorialpark134/mp134-05-pan-in-trench.jpg>

[12] <http://www.learnz.org.nz/sites/learnz.org.nz/files/Field%20trips/memorialpark134/b-mp134-06-pan-bypass.jpg>

[13] <http://www.learnz.org.nz/sites/learnz.org.nz/files/Field%20trips/memorialpark134/b-mp134-08-pan-south-wall.jpg>

[14] <http://www.learnz.org.nz/sites/learnz.org.nz/files/Field%20trips/memorialpark134/b-mp134-d03-09-pan-north-wall.jpg>