

Which messy culprits left these droppings?

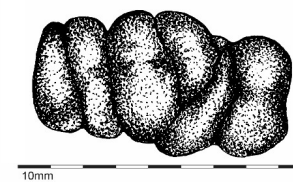
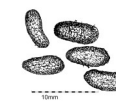
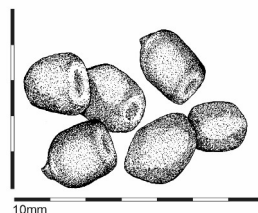
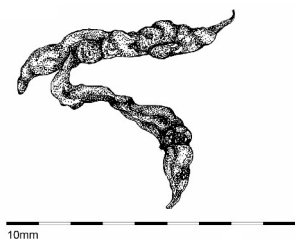


www.pestdetective.org.nz

Wild animals don't use toilets so the poos (droppings) they leave are a common clue.

Which size and shape are they? Are they smooth or wrinkly looking? Sometimes you can see bits of what the animal has been eating.

REMEMBER: *always scrub your hands clean if you've touched any poos – they can carry dirt and disease*



<p>Whose poos?</p> <p>.....</p> <p>Circle this poo's shape</p> <p>Round or Long</p>	<p>Whose poos?</p> <p>.....</p> <p>Circle this poo's shape</p> <p>Round or Long</p>	<p>Whose poos?</p> <p>.....</p> <p>Circle this poo's shape</p> <p>Round or Long</p>	<p>Whose poos?</p> <p>.....</p> <p>Circle this poo's shape</p> <p>Round or Long</p>	<p>Whose poos?</p> <p>.....</p> <p>Circle this poo's shape</p> <p>Round or Long</p>	<p>Whose poos?</p> <p>.....</p> <p>Circle this poo's shape</p> <p>Round or Long</p>
---	---	---	---	---	---

Choose from these culprits

White-tailed deer



Stoat



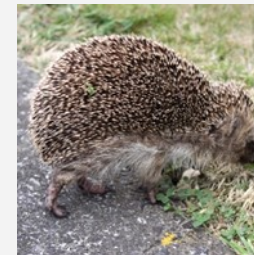
Norway rat



Wild pig



Hedgehog



Rabbit

